



**PARS SHIR Mfg. Co.**  
Technology & safety

**Model**

**Horizontal thermocouple valve – Type 1**

Brass gas taps with safety device

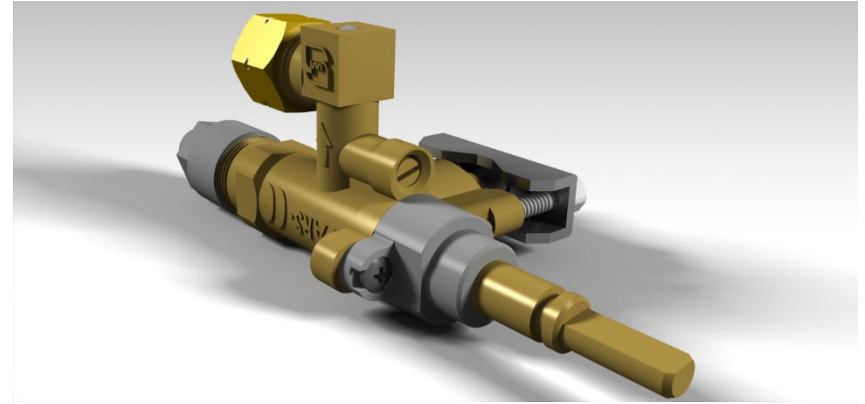
Construction

**Body:** Forged brass

**Cone:** Brass

**Cap:** Die cast aluminum alloy

**Spindle:** Brass



Connections

**Standard Inlet:** Round 16 mm. diameter

**Standard Outlet:** M13×1 male

**Spindle dimension:** 6.5×8mm.

Shape according to customer's request

Functional data

**Maximum working temperature:** 100°C

**Maximum working pressure:** 65 mbar

**Flow:** 360 l/h

**Internal leak tightness:** < 20 cc/h (at 150 mbar)

**Stroke:** 3.5 – 4 mm.

Brass

Installation

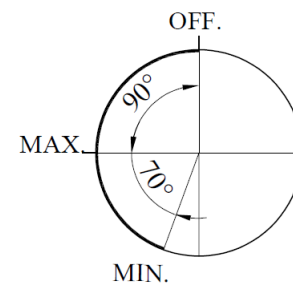
**Maximum inlet torque:** 1.5 Nm.

**Maximum outlet torque:** 15 Nm.

**Maximum injector torque:** 4 Nm.

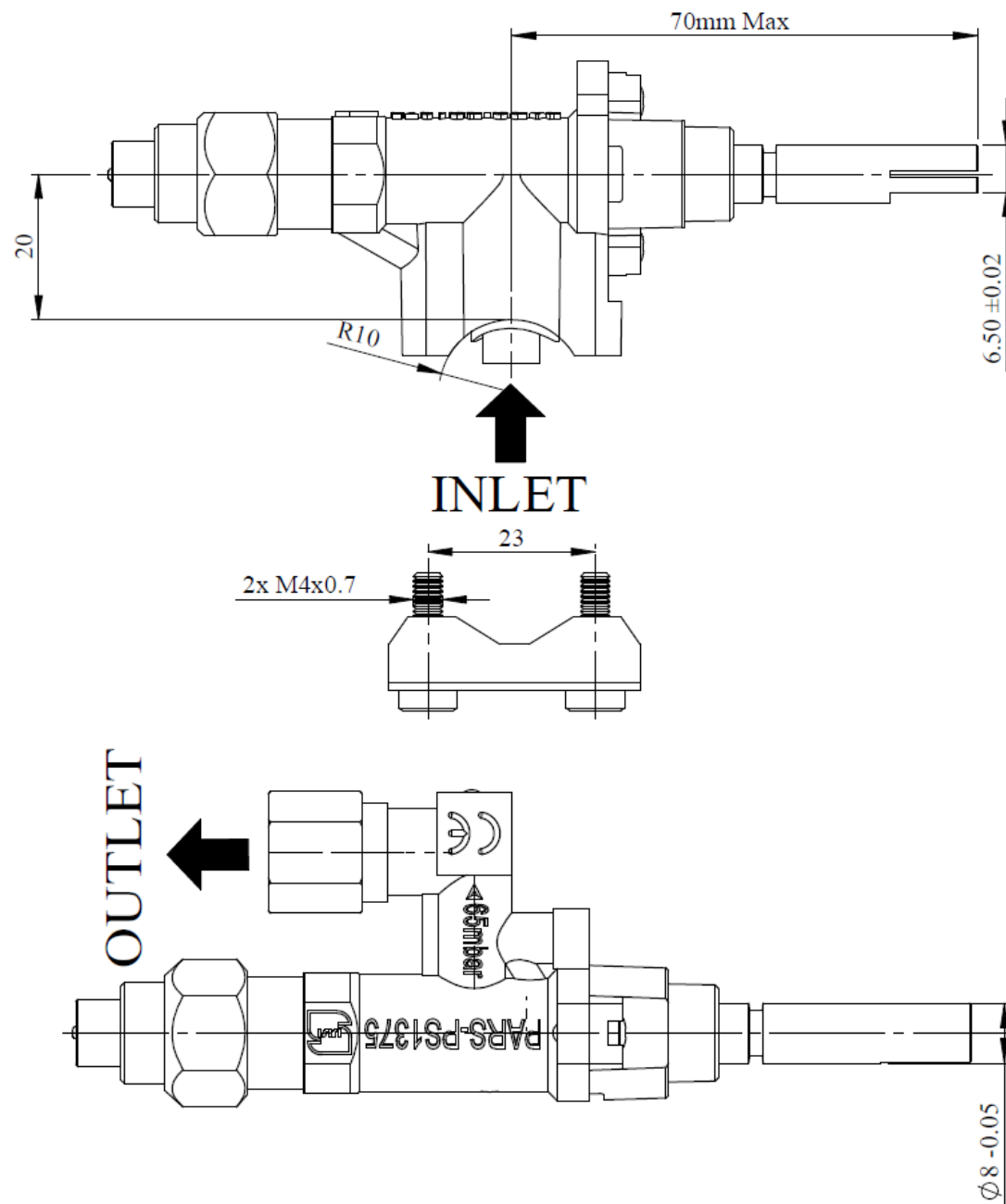
**Maximum thermocouple torque for different thread size:** 4 Nm.

Spindle rotation diagram



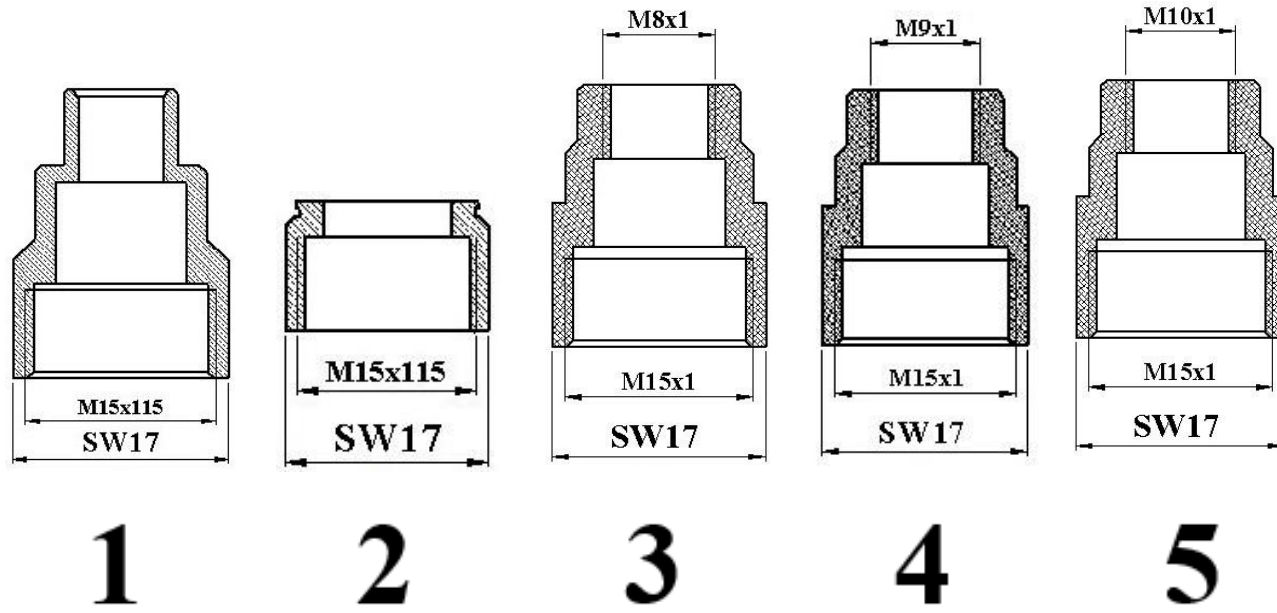
Operation sequence

Overall dimensions





Magnet nuts according to customer's request



Magnet nuts	
1	Coaxial
2	Fast-on
3	Thread
4	Thread
5	Thread

Outlet according to customer's request

Outlet		
1	M13x1 – G1/4	Type 1
2	M13x1 – G1/4	Type 2
3	M13x1 – G1/4	Type 3

