



PARS SHIR Mfg. Co.
Technology & safety

Model

Vertical thermocouple valve – Type 1

Brass gas taps with safety device

Construction

Body: Forged brass

Cone: Brass

Cap: Die cast aluminum alloy

Spindle: Brass

Connections

Standard Inlet: Round 16 mm. diameter

Standard Outlet: M12×1 male

Spindle dimension: 4.6×6 mm.

Shape according to customer's request

Functional data

Maximum working temperature: 100°C

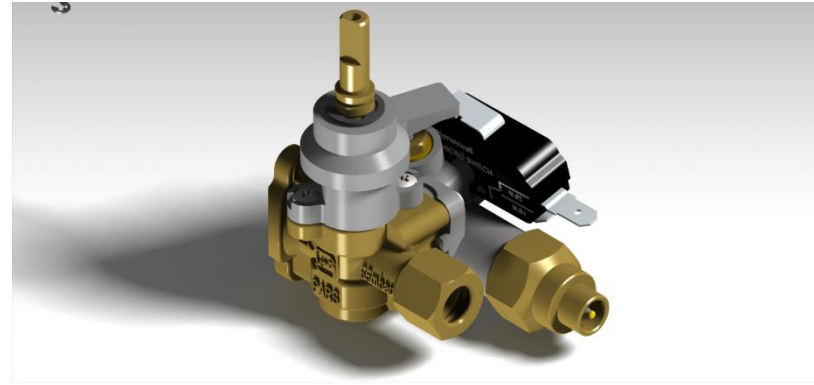
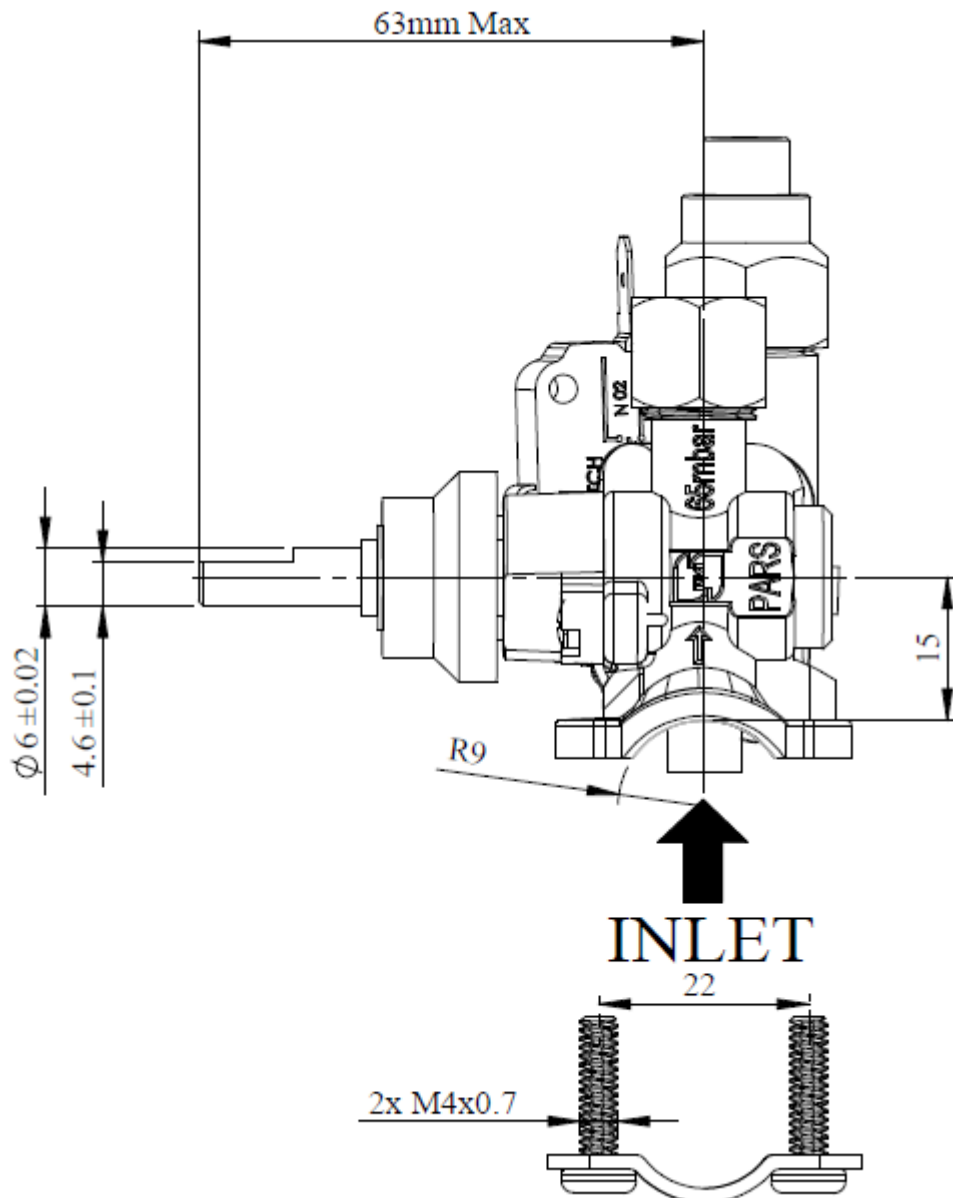
Maximum working pressure: 65 mbar

Flow: 360 l/h

Internal leak tightness: < 20 cc/h (at 150 mbar)

Stroke: 2.5 - 3 mm.

Overall dimensions



Brass

Installation

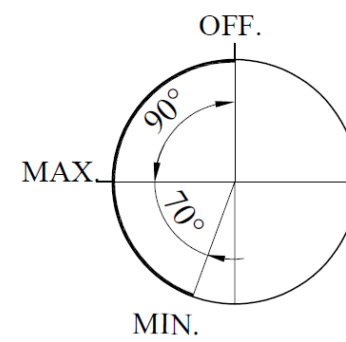
Maximum inlet torque: 1.5 Nm.

Maximum outlet torque: 14 Nm.

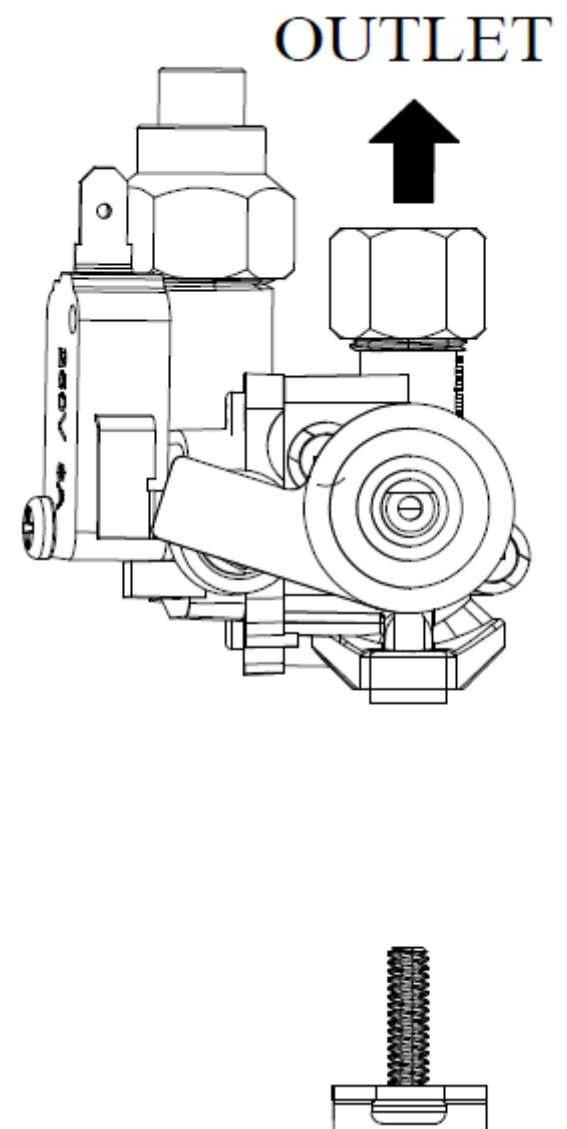
Maximum injector torque: 4 Nm.

Maximum thermocouple torque for different thread size: 4 Nm.

Spindle rotation diagram

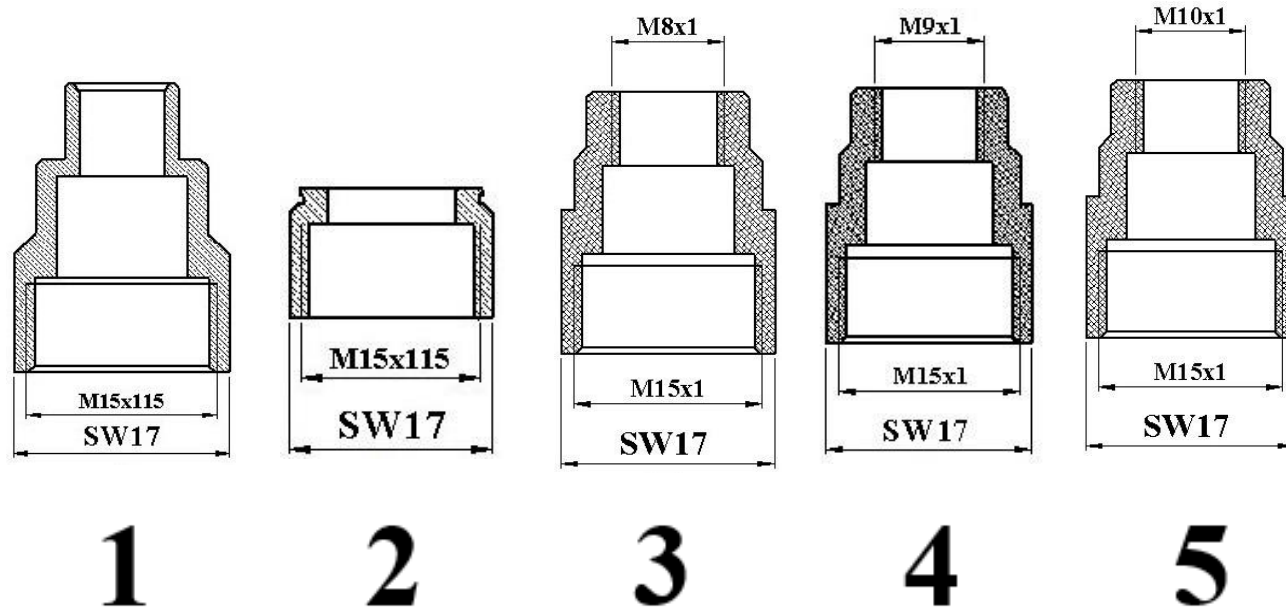


Operation sequence





Magnet nuts according to customer's request



Magnet nuts	
1	Coaxial
2	Fast-on
3	Thread
4	Thread
5	Thread

Outlet nuts according to customer's request

Outlet		
1	M12x1	Type 1
2	M12x1	Type 2

