



PARS SHIR Mfg. Co.
Technology & safety

Model

Vertical valve – Type 5

Extruded aluminium gas taps without safety device

Construction

Body: Extruded Aluminium Body

Cone: Brass / Aluminium

Cap: Die cast Aluminium alloy

Spindle: Brass

Connections

Standard Inlet: Round 16 mm. diameter

Standard Outlet: M12×1 male

Spindle dimension: 6×4.6 mm.

Shape according to customer's request

Functional data

Maximum working temperature: 100°C

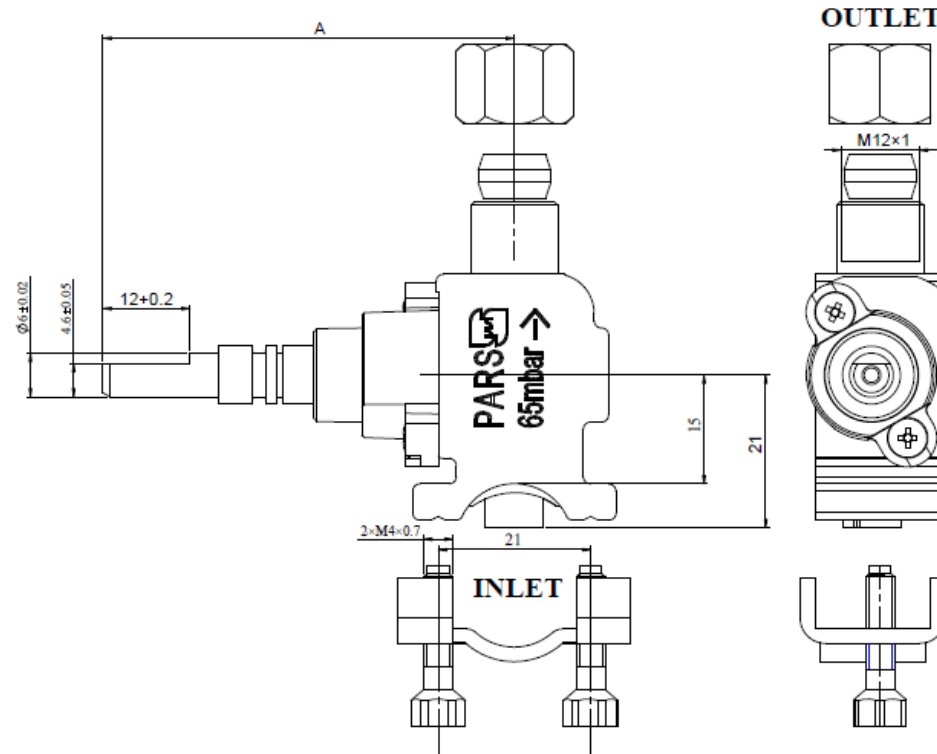
Maximum working pressure: 65 mbar

Flow: 360 l/h

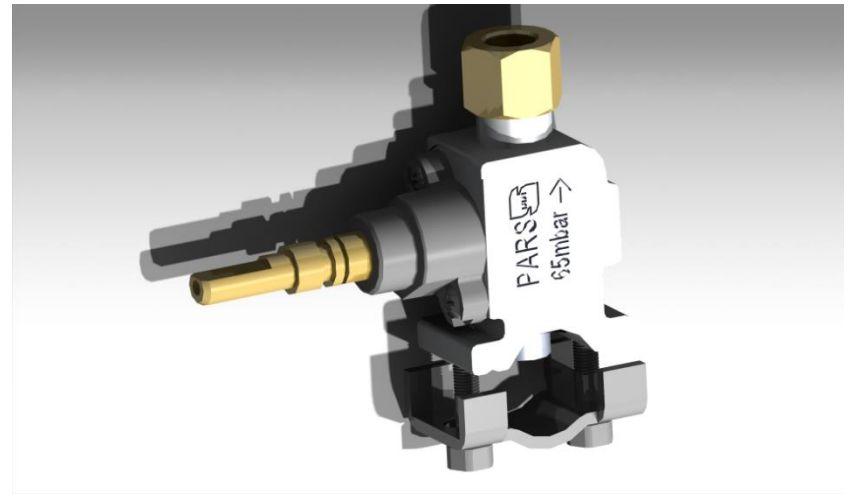
Internal leak tightness: < 20 cc/h (at 150 mbar)

Stroke: 3.5 – 4 mm.

Overall dimensions



A :according to the cusomer's request.



Brass

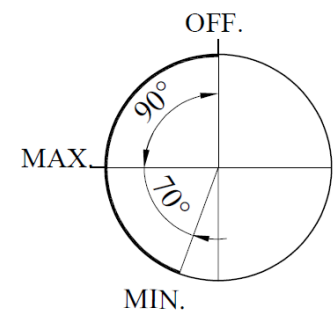
Installation

Maximum inlet torque: 1.5 Nm.

Maximum outlet torque: 15 Nm.

Maximum injector torque: 4 Nm.

Spindle rotation diagram

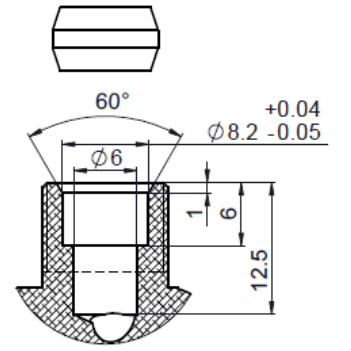
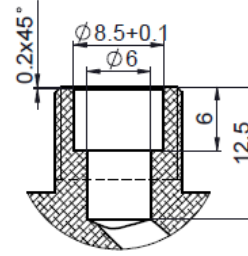
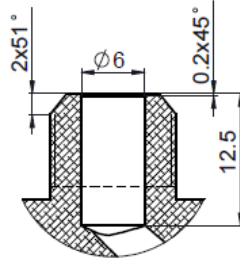
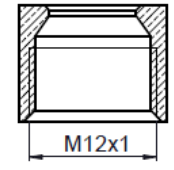
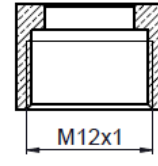
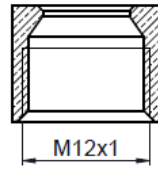


Operation sequence



Outlet according to customer's request

Outlet types	
1	Type 1
2	Type 2
3	Type 3



Type 1

Type 2

Type 3